



Kings Wood Park, Epping, CM16

BUTLER  STAG



Overlooking the green in the highly sought-after Kings Wood Park development, this beautifully presented five-bedroom detached home offers exceptional living space across three floors, perfectly suited for modern family life.



Freehold

- Substantial Detached Family Home
- Five Double Bedrooms/Three Bathrooms
- Two Formal Reception Rooms
- Utility & Separate W/C
- 2701 sq. ft Of Accommodation Space
- Master Suite Includes En-suite & Walk-In Dressing Room
- Open Plan Kitchen/Dining Room
- Detached Double Garage & Off-Street Parking For Two Vehicles

The ground floor features a spacious living room, a separate dining room, and a contemporary kitchen/breakfast room, complemented by a utility room and a convenient downstairs WC.

The first floor hosts three generous double bedrooms, a versatile sixth bedroom/study, and two stylish en-suite shower rooms. The top floor is home to two further large double bedrooms and a well-appointed family bathroom.

Externally, the property benefits from a well-maintained private rear garden leading to a detached double garage and off-street parking for two vehicles.

The property is cocooned in tranquillity, a peaceful escape from the hustle and bustle of daily life yet still only residing within a ten minute walk to Epping's vibrant High Street for the many shops, restaurants and bars. Located off Epping High Street on Station Road is Epping Central Line station which offers a direct access into the city within 38 minutes and the West End in just 46 minutes.

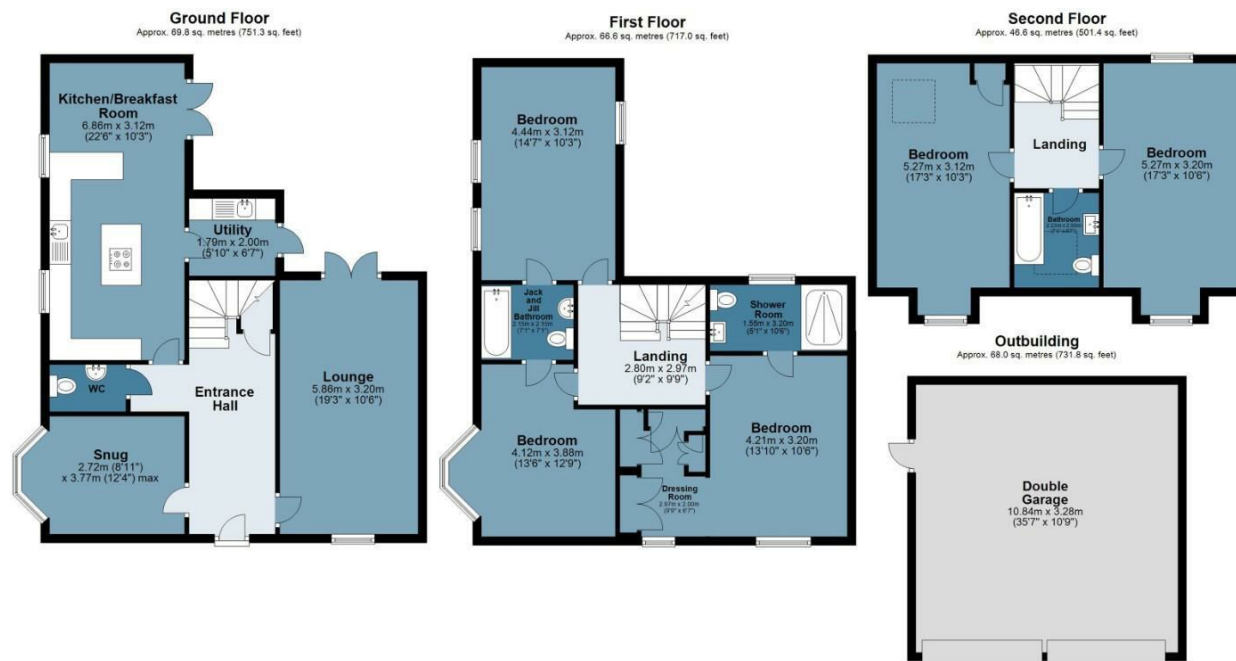




Kingswood Park

Approx. Gross Internal Area 251 Sq M (2701.6 Sq Ft)

BUTLER & STAG



Measurements are approximate and for illustration purposes only. While we do not doubt the accuracy and completeness, we advise you conduct a careful independent assessment of the property to determine monetary value.

© @modephoto.uk www.modephoto.co.uk

BUTLER & STAG

☎ 01992 667666

🏠 4 Forest Drive, Theydon Bois, Essex, CM16 7EY

✉ theydon@butlerandstag.com

www.butlerandstag.uk

IMPORTANT NOTICE - These particulars have been prepared in good faith and they are not intended to constitute part of an offer or contract. We have not performed a structural survey on this property and the services, appliances and specific fittings have not been tested. All photographs, measurements, floor plans and distances referred to are given as a guide and should not be relied upon.